

# Department of Computer Science and Technology



Prof Robert Watson

Chair, Equality, Diversity & Inclusion Committee



Prof Alastair Beresford  
Head of Department



Dr Sue Sentance

Academic Chair, Women@CL  
Wellbeing Advocate for Research Staff

## Department of Computer Science and Technology (continued)



Alicja Zavros  
HR Manager



Caroline Stewart  
Departmental Secretary



Helen Francis  
Research Strategy Manager



Yasir Khan  
HR Coordinator



Celia Burns  
Faculty Administrator and Coach

# Department of Computer Science and Technology (continued)



Anoushka Harit  
Chair, Women@CL



Dr Sue Sentance  
Academic Chair, Women@CL  
Wellbeing Advocate for Research Staff



Carrie Anne Philbin  
Deputy Chair, Women@CL

## Members of the Research Staff Forum



Sadiq Jaffer (Chair)  
Senior Research Associate



Ajay Shankar  
Research Associate



Andrew Caines  
Senior Research Associate



Davi De Castro Silva  
Research Associate



Irmak Dogan  
Research Associate



James Sharkey  
Senior Research Software Engineer

# Cambridge Enterprise



Mahesh Santiapillai  
Investment Manager  
(Software & DeepTech)



Dr Nathalie Muller  
Senior Commercialisation and Outreach Manager



Connor Farrell  
Senior Associate



Dr Oleksandra Korychenska  
Technology Development  
& Project Manager

# The Postdoc Academy



Hollie Godden  
Community Manager



Shaun Ballisat  
Senior Centres Coordinator

# An Introduction to the Research Strategy Team

Helen Francis  
Research Strategy Manager

# Research Strategy Team

Support all aspects of research lifecycle from idea to impact



Helen  
Francis

## Research Strategy Manager

- Research funding
- Industry engagements
- Philanthropic funding
- Research impact
- *CE Enterprise Champion*



Ben  
Karniely

## Snr Research Strat Coord.

- Supporters' Club and Ring
- Donor Reporting
- Event Organization
- Partner Manager AI4ER



Katherine  
Leckie

## Impact Facilitator

- Research Funding
- Impact
- REF preparation



Rachel  
Gardner

## Communications Manager

- News articles
- Engagement & Outreach
- Social Media
- Website



JungHa  
Woodward



Kata  
Szabo

## Research Strategy Coordinators

- Project Coordination
- Event Organisation



Aga  
Niewiadomska

## Outreach Administrator

- Engagement with schools
- Cambridge Festival



UNIVERSITY OF  
CAMBRIDGE

Department of Computer  
Science and Technology

# When to come and see us?

---

Here to support you in your research career



# Cambridge Ring – Alumni Organisation

Open to anyone who has worked or studied in the Department

- Over 2,000 members on the mailing list
- An online discussion forum with over 1,000 members - The Ring Forum
- A LinkedIn group with 600 members - Cambridge Computer Lab Ring
- Over 365 Hall of Fame companies
- For more information, please visit [www.cst.cam.ac.uk/ring](http://www.cst.cam.ac.uk/ring)



# Supporters' Club

---

## Mutually beneficial organisation for members and the Department

- Over 90 member companies ranging from huge multinationals to small start ups
- Small subscription fee
- For Companies
  - Ability to buy stand at Annual Recruitment Fair - 7<sup>th</sup> & 8<sup>th</sup> November 2024
  - Give Tech talks to students
  - Collaborate with researchers
  - Student contact
- For the Department
  - Job opportunities and internships
  - Collaborate with companies
  - Events and competitions
  - Support Part 1B projects
- <https://www.cst.cam.ac.uk/supporters-club>



# Come and speak to us

---

## It's never too early to engage

- Offering a 15 minute chat for any postdoc this term to explore how we can help you.
- Please contact Katherine Leckie by emailing [impact-facilitator@cst.cam.ac.uk](mailto:impact-facilitator@cst.cam.ac.uk) to book a slot.

# Postdoc Academy

Hollie Godden  
Community Manager

# University of Cambridge Postdoc Academy



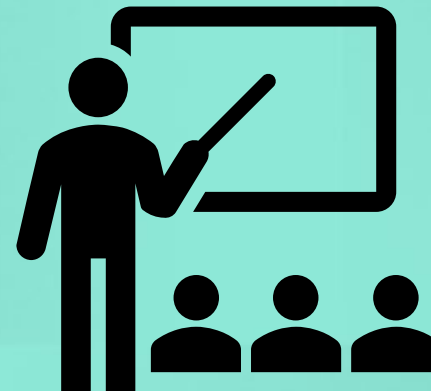
## Information

Bringing postdocs  
the information they  
need, when they  
need it



## Community

A sense of belonging  
for all postdocs



## Professional Development

Helping postdocs to  
develop for their  
current role and  
beyond



## Advocacy

Working with the  
community to solve  
issues



## Information

Find out about events for postdocs, professional opportunities, support and initiatives, and social community activities

- Website and Postdoc Calendar
- Weekly Postdoc Bulletin
- LinkedIn
- Postdoc Information Events
- [contact.pda@admin.cam.ac.uk](mailto:contact.pda@admin.cam.ac.uk)



## Community

Meet your peers and cultivate meaningful connections that can span your career

- Community building events and activities, themed on relevant topics
- Working with postdoc societies and groups to support social activities and community endeavours
- Offering hot-desking and event spaces at the Postdoc Centres

# Postdoc Centres

## Eddington



Hot-desking 7am – 11pm

Sanders Hall capacity 100

Multi-Function Space capacity 40

## Mill Lane



Hot-desking 8am – 10pm

Eastwood Room capacity 50

Seminar Room capacity 25

Committee Room capacity 12

## Biomedical Campus



Hot-desking 8am – 11pm

Newnham Library capacity 30

Seminar Room capacity 20

Committee Room capacity 6

# Postdoc Academy Professional Development

## Workshops & Courses



Leadership

Research project management

Writing fellowship grants

Teamwork and collaboration

Entrepreneurial skills for all

## Postdocs 2 Innovators



UK/EU network

For all researchers

Online courses

P2i website and LinkedIn

## Mentoring



9-month programme

3 rounds per year

Hand-matched



## Advocacy

Understanding the lived experience and being representative of the whole postdoc community

- Working with individuals and groups to understand and address needs
- Representing postdoc voices within the University, nationally and internationally
- Aiming to improve the landscape for current and future postdocs



## Quick-Start Guide

These are the best ways to get started and make the most of our services:

1. Register to use a Postdoc Centre
2. Subscribe to the Postdoc Bulletin
3. Check the Postdoc Calendar

Find your next steps in the guide!

# Cambridge Enterprise

Translating University research  
output into globally significant  
economic and social impact



# What does that mean for you?

Our mission:

We **help** researchers to use commercial avenues to develop their ideas and expertise for the **benefit** of society, the economy, themselves and the University

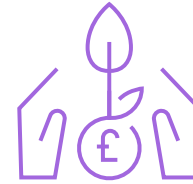
# CE Resources for researchers



Consultancy  
services



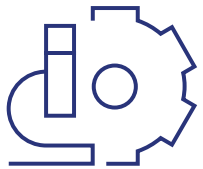
Technology  
Development,  
Protection & Licensing



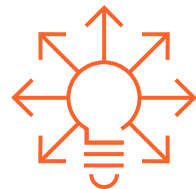
£10m Technology  
Investment Fund (TIF)



Industry engagement



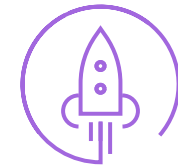
Research tools  
Licensing



Entrepreneurial  
eco-system

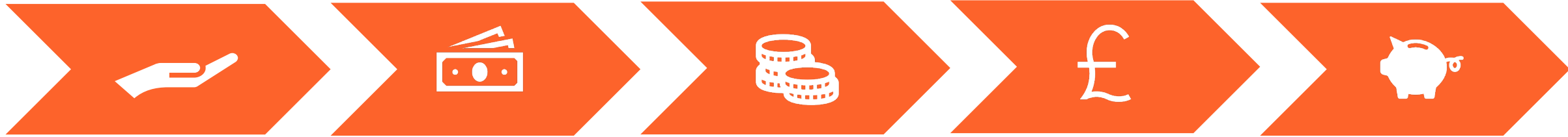


Founders accelerator  
programmes &  
incubator space



Seed investment &  
support for new  
companies

# Cambridge Enterprise puts effort and money into Cambridge ideas



## TIF

University-backed translational grants

Only projects from TT portfolio

Proof-of-concept, market testing

## Pathfinder

Up to **£20K** loan

Commercial Strategy,  
Customer Engagement

Software Prototyping,  
Field testing

## Pre-seed / Founders

Up to **£150K**  
convertible or equity  
investment

Opportunity Validation

Matched by external  
investors

## Seed / Follow

Up to **£1m** per  
investment round

Half available via UCEF  
(EIS Co-Investment  
Fund)

External matching  
funds required

## Series A / Growth

CIC and network of co-  
investors to help raise  
follow-on growth  
funding

# Ideas to Reality Programme:

A series of workshops designed to provide you with the guidance and tools to translate your ideas, research and expertise into real-world impact.

Find out more and join us there this Autumn.



## Creating Impact through Commercialisation

24<sup>th</sup> September  
*online*

## IP & Commercialisation 101

20<sup>th</sup> October  
*Biomedical Campus*

## Venture Creation 101

11<sup>th</sup> November  
*Biomedical Campus*

## Consultancy 101

11<sup>th</sup> November  
*Biomedical Campus*

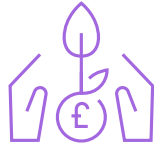
## Software & Data 101

3<sup>rd</sup> December  
*online*

# Get in touch!



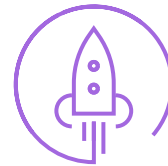
[oleksandra.korychenska@enterprise.cam.ac.uk](mailto:oleksandra.korychenska@enterprise.cam.ac.uk)



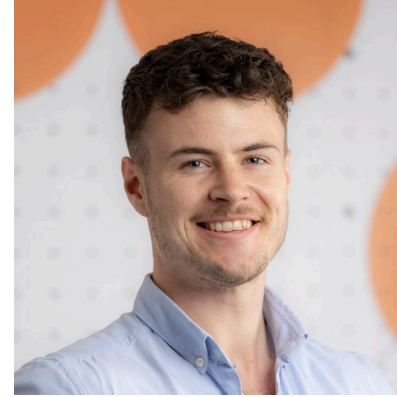
£10m TIF



[mahesh.santiapillai@enterprise.cam.ac.uk](mailto:mahesh.santiapillai@enterprise.cam.ac.uk)



Ventures



[connor.farrell@enterprise.cam.ac.uk](mailto:connor.farrell@enterprise.cam.ac.uk)



Founders



[nathalie.muller@enterprise.cam.ac.uk](mailto:nathalie.muller@enterprise.cam.ac.uk)



TD&L



UNIVERSITY OF  
CAMBRIDGE

Department of Computer  
Science and Technology

# HR TEAM



# Meet Your HR Team

---



Alicja Zavros  
HR Manager



Kate Ellis  
HR Coordinator



Helen Milton  
HR Coordinator



Yasir Khan  
HR Coordinator

# HR Resources

---

## **Departmental HR Resources:**

- Induction guidelines
- HR Policies
- Promotions
- Appraisal
- Conflicts of Interest
- Wellbeing

Website: <https://www.cst.cam.ac.uk/local/personnel>

## **University-wide HR Resources:**

- University Induction, HR Policies and Benefits, Childcare Office
- Training and Development, Immigration Advice, Grading
- Pay and Benefits, [Payslips and Employee Self Service](#)
- Website: <https://www.hr.admin.cam.ac.uk/>

# What the University has to offer

---

The University's employee benefits package includes:

**CAMbens**

**Financial benefits** - CAMbens Discounts, Totum Card, Pensions, Rental Deposit Scheme, Visa Loan Scheme

**Travel benefits** - CAMbens Cycle to Work, cycle shop discounts, Enterprise Card Car Club, travel to work loan, train and bus discounts.

**Health benefits** - Discounted private healthcare scheme, salary sacrifice gym membership scheme for gym on West Cambridge site.

**Local Benefits** - Available from a number of local retailers - just show your University card. Access to the University's Accommodation Office

Details of all staff benefits are listed on the CAMbens website at:

[www.hr.admin.cam.ac.uk/pay-benefits/cambens-employee-benefits](http://www.hr.admin.cam.ac.uk/pay-benefits/cambens-employee-benefits)

# Academic Career Pathway (Research) scheme

- Changes to current titles (Grades 9, 11,12) take effect from 1<sup>st</sup> October 2025
- New roles at Grades 6,8, and 10 will be introduced until 1 October 2026
- New promotion processes for Research staff planned for academic year 2026-27
- Existing promotion processes will remain in place for this academic year

Grade	Current title	New title
5	Research Assistant	Research Assistant (no change)
6	No role at this grade currently	Senior Research Assistant
7	Research Associate	Research Associate (no change)
8	No role at this grade currently	Senior Research Associate
9	Senior Research Associate	Assistant Research Professor
10	No role at this grade currently	Associate Research Professor
11♦	Principal Research Associate	Research Professor (Grade 11)*
12♦	Director of Research	Research Professor (Grade 12)**/**

More info: [Implementation ACP Research Changes](#)

# New Pay Progression Scheme

---

- Contribution Reward Scheme
  - Annual scheme for Grades 5 to 11
  - Nominations for increment up to 3 spine points, or a single contribution payment up to 3% annual salary
  - Grade 12 staff eligible for Academic Career Pathways
- Launch Date: February 2026 | Effective: August 2026

[Contribution Reward Scheme for Researchers](#)

# Questions

---

